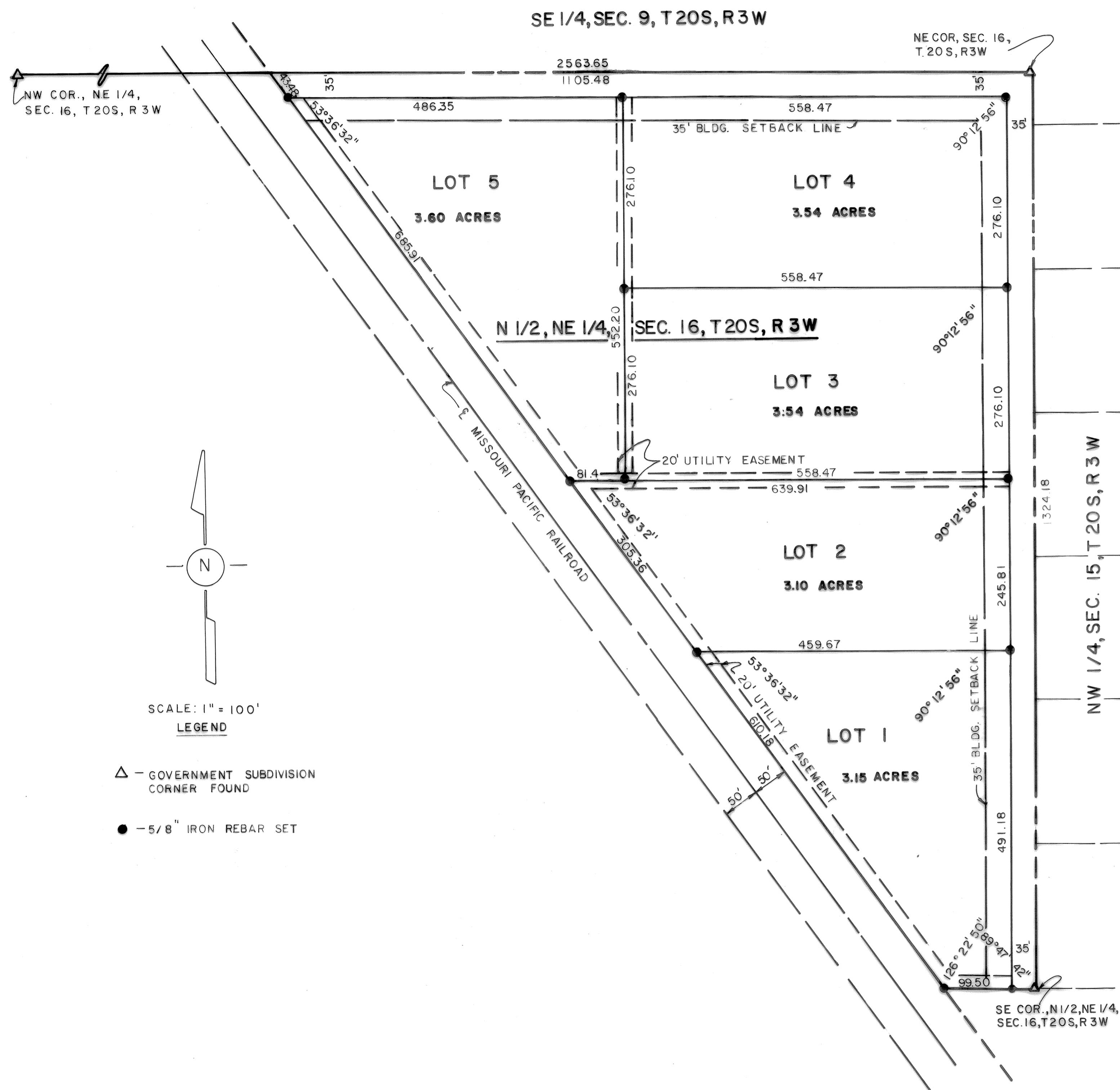


LEISURE ACRES

A SUBDIVISION OF THAT PORTION OF THE N. 1/2 OF THE NE 1/4, SECTION 16, TOWNSHIP 20 S., R.3W. OF THE 6TH PRINCIPAL MERIDIAN LYING NORTH OF THE MISSOURI PACIFIC RAILROAD IN MCPHERSON CO., KANSAS.



DESCRIPTION:

BEGINNING AT THE NORTHEAST CORNER OF THE NORTHEAST QUARTER OF SECTION 16, TOWNSHIP 20 SOUTH, RANGE 3 WEST OF THE 6TH PRINCIPAL MERIDIAN; THENCE SOUTH ALONG THE EAST LINE OF SAID NE 1/4 1324.18 FT. TO THE SOUTHEAST CORNER OF THE NE 1/4 OF SAID NE 1/4; THENCE WITH A DEFLECTION ANGLE 90°12'18" RIGHT-WEST ALONG THE SOUTH LINE OF THE NE 1/4 OF SAID NE 1/4 134.50 FT. TO THE NORTHEASTERLY RIGHT-OF-WAY LINE OF THE MISSOURI-PACIFIC RAILROAD; THENCE WITH A DEFLECTION ANGLE 53°37'10" RIGHT-NORTHWEST ALONG SAID RIGHT-OF-WAY LINE 1644.99 FT. TO THE NORTH LINE OF SAID NE 1/4; THENCE WITH A DEFLECTION ANGLE 126°23'28" RIGHT-EAST ALONG THE NORTH LINE OF SAID NE 1/4 1105.48 FT. TO THE POINT OF BEGINNING CONTAINING 18.85 ACRES IN MCPHERSON COUNTY, KANSAS.

SURVEYOR'S CERTIFICATE:

I, DANIEL E. GARBER, A REGISTERED LAND SURVEYOR IN THE STATE OF KANSAS, DO HEREBY CERTIFY THIS PLAT TO BE A TRUE, CORRECT AND COMPLETE REPRESENTATION OF THE ABOVE DESCRIBED PROPERTY AND THAT I HAVE ESTABLISHED PERMANENT MARKERS AT ALL BLOCK CORNERS, CURVE POINTS AND SUBDIVISION CORNERS AS SHOWN HEREON, AS SURVEYED BY ME, THIS 12th DAY OF JULY, 1983.

Daniel E. Garber
DANIEL E. GARBER RLS #688

EASEMENTS:

EASEMENTS SHOWN BY DASHED LINES ON THE ACCOMPANYING PLAT ARE HEREBY DEDICATED FOR PUBLIC USE AND MAY BE EMPLOYED AS A COVENANT RUNNING WITH THE LAND FOR THE PURPOSE OF INSTALLING, REPAIRING, RE-INSTALLING, REPLACING AND MAINTAINING SEWERS, WATER LINES, GAS LINES, ELECTRIC LIGHT LINES AND POLES, TELEPHONE LINES AND POLES AND OTHER FORMS AND TYPES OF PUBLIC UTILITIES NOW OR HEREAFTER GENERALLY UTILIZED BY THE PUBLIC.

STREETS:

STREETS SHOWN ON THIS PLAT AND NOT HERETOFORE DEDICATED TO PUBLIC USE ARE HEREBY SO DEDICATED.

BUILDING SETBACK LINES:

BUILDING LINES OR SETBACK LINES ARE HEREBY ESTABLISHED AS SHOWN ON THE ACCOMPANYING PLAT AND NO BUILDING OR PORTION THEREOF SHALL BE BUILT OR CONSTRUCTED BETWEEN THIS LINE AND THE STREET LINE. BUILDING SETBACK LINE ON THIS PLAT IS ESTABLISHED AT 35.00 FT. FROM STREET LINE.

DEDICATION:

WE, THE UNDERSIGNED, S. SCOTT RIGGENBACH AND BRENDA J. RIGGENBACH AND AUSTIN L. HAVENS AND GLADYS R. HAVENS, DO HEREBY CERTIFY THAT WE ARE THE OWNERS OF THE PROPERTY DESCRIBED HEREON AND HAVE SUBDIVIDED THE SAME INTO LOTS IN THE MANNER SHOWN ON THE ACCOMPANYING PLAT. SAID SUBDIVISION SHALL BE KNOWN AS "LEISURE ACRES", A SUBDIVISION OF THAT PORTION OF THE NE 1/4, SECTION 16, TOWNSHIP 20 S., R. 3 W. OF THE 6TH PRINCIPAL MERIDIAN LYING NORTH OF THE MISSOURI PACIFIC RAILROAD IN MCPHERSON COUNTY, KANSAS.

WE HAVE CAUSED THESE PRESENTS TO BE SIGNED THIS 25th DAY OF JULY, 1983.

S. Scott Riggenbach
S. SCOTT RIGGENBACH

Austin L. Havens
AUSTIN L. HAVENS

Brenda J. Riggenbach
BRENDA J. RIGGENBACH

Gladys R. Havens
GLADYS R. HAVENS

STATE OF KANSAS
COUNTY OF MCPHERSON SS

THE FOREGOING INSTRUMENT WAS ACKNOWLEDGED BEFORE ME THIS 25th DAY OF July, 1983 BY S. SCOTT RIGGENBACH AND BRENDA J. RIGGENBACH AND AUSTIN L. HAVENS AND GLADYS R. HAVENS.

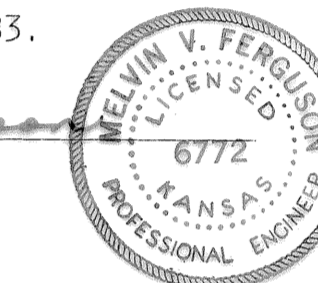
R. DEAN ELLIOTT
NOTARY PUBLIC
STATE OF KANSAS
My Appl. Exp. 2-9-86

R. Dean Elliott
NOTARY PUBLIC

STATE OF KANSAS
COUNTY OF MCPHERSON SS

BE IT KNOWN, THAT THE ATTACHED PLAT WAS SUBMITTED TO ME AND WAS APPROVED THIS 29th DAY OF July, 1983.

SIGNED: *Marvin Szymanski*
COUNTY ENGINEER



STATE OF KANSAS
COUNTY OF MCPHERSON SS

BE IT KNOWN, THAT THE ATTACHED PLAT WAS SUBMITTED TO ME AND WAS APPROVED THIS 2nd DAY OF August, 1983.

SIGNED: *John B. Hamlett*
COUNTY ATTORNEY

STATE OF KANSAS
COUNTY OF MCPHERSON SS

BE IT KNOWN, THAT THE ATTACHED PLAT WAS SUBMITTED TO ME AND WAS APPROVED THIS 25th DAY OF July, 1983.

SIGNED: *John L. Colyn*
CHAIRMAN, COUNTY PLANNING BOARD

STATE OF KANSAS
COUNTY OF MCPHERSON SS

BE IT KNOWN, THAT THE ATTACHED PLAT WAS SUBMITTED TO ME AND WAS APPROVED THIS 1st DAY OF August, 1983.

SIGNED: *Nancy P. Bryan*
CHAIRMAN, MCPHERSON CO. COMMISSION

SIGNED: *Margaret Bryan*
COUNTY CLERK

STATE OF KANSAS
COUNTY OF MCPHERSON SS

THIS INSTRUMENT WAS FILED FOR RECORD IN THE REGISTER OF DEEDS OFFICE AT 12:30 ON THE 3rd DAY OF Aug, 1983.

SIGNED: *Rosalie Nelson*
REGISTER OF DEEDS

Plat A 72
ENTERED ON TRANSFER RECORD THIS 1st DAY OF August, 1983.

SIGNED: *Margaret Bryan*
COUNTY CLERK

